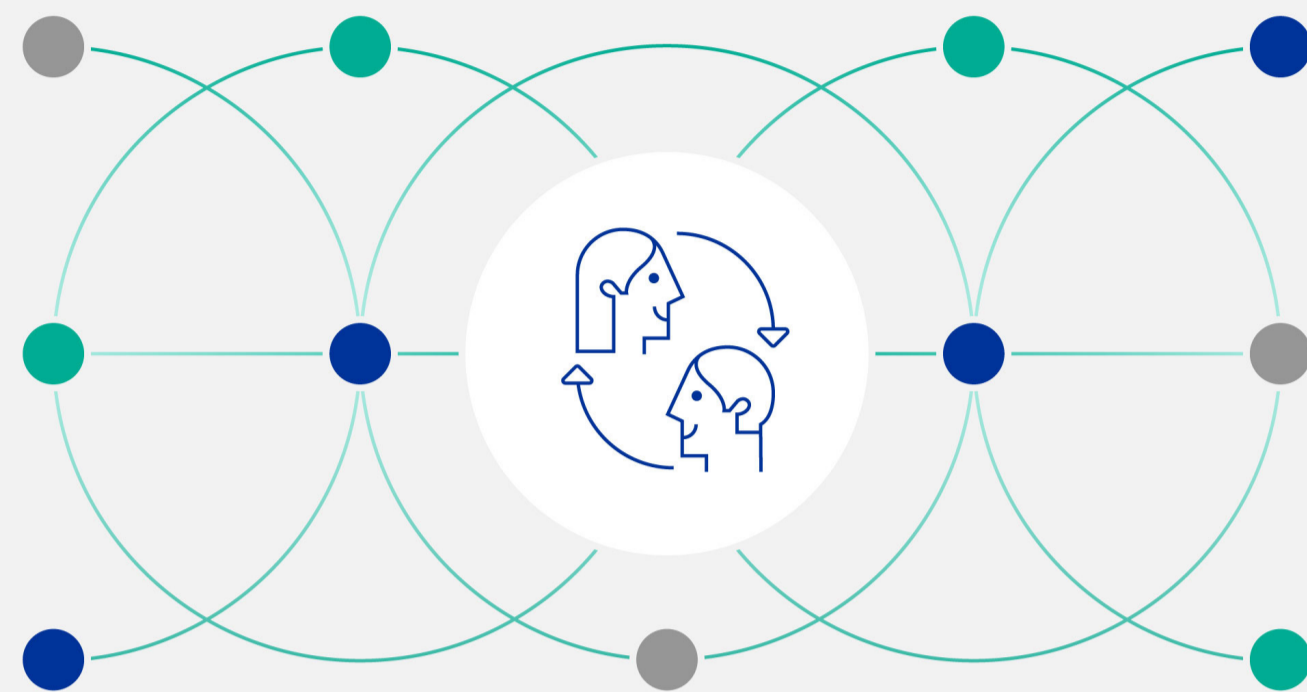




EVITA

EuroHPC Virtual Training Academy

OBJECTIVES



- Develop a coherent Competence and Qualification Framework (CQF) for HPC skills across Europe
- Establish an online platform and repository for HPC training and learning materials
- Launch public calls for high-quality HPC training modules
- Facilitate collaboration and exchange among HPC education and training providers across Europe

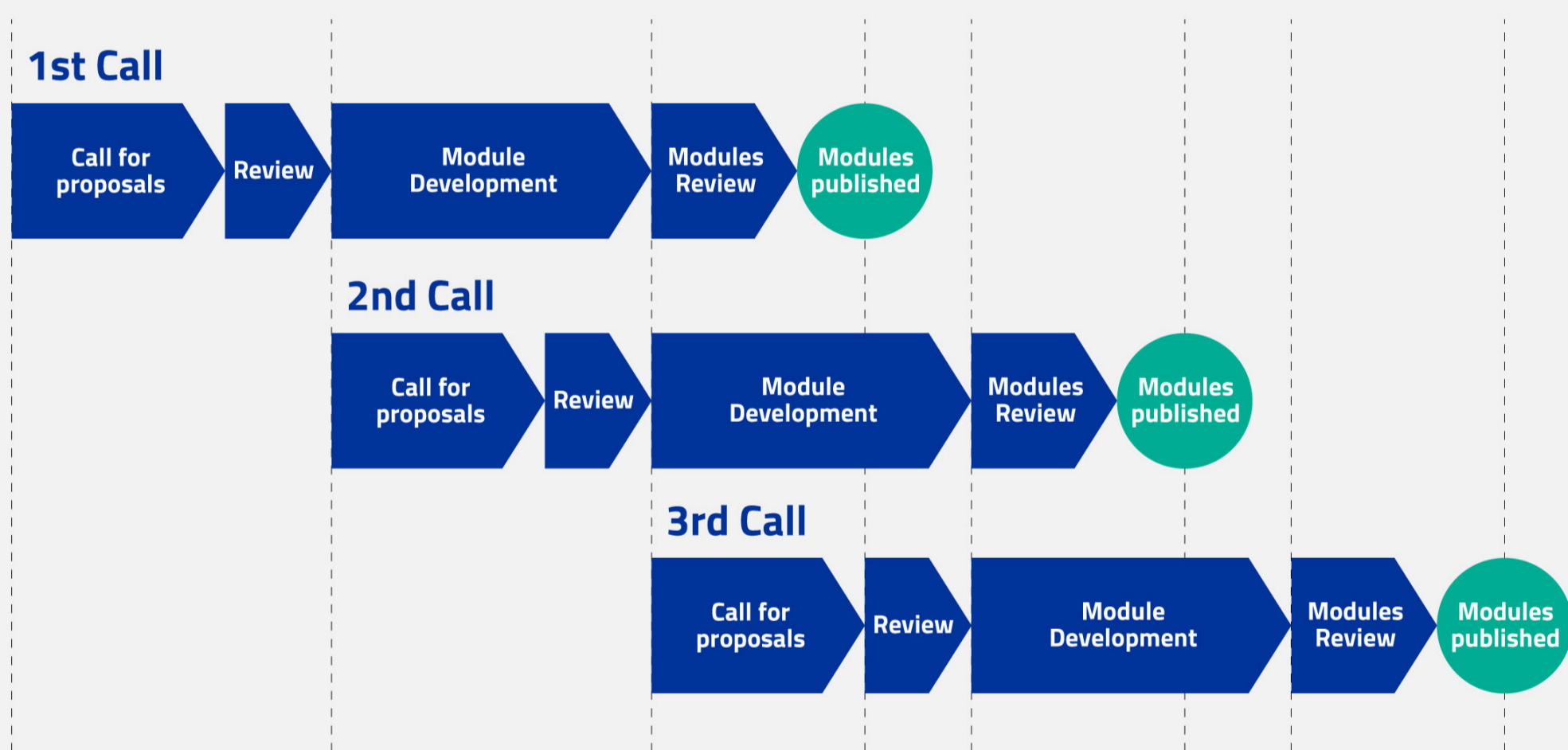
OUR MISSION

→ Competence and Qualification Framework (CQF)

Building a unified Competence and Qualification Framework (CQF) that defines the skills needed across the HPC landscape. This framework guides the development of harmonised training materials, modular learning units, and flexible courses that can be combined into personalised learning pathways.

→ Funding to Support Your Training Module Contributions

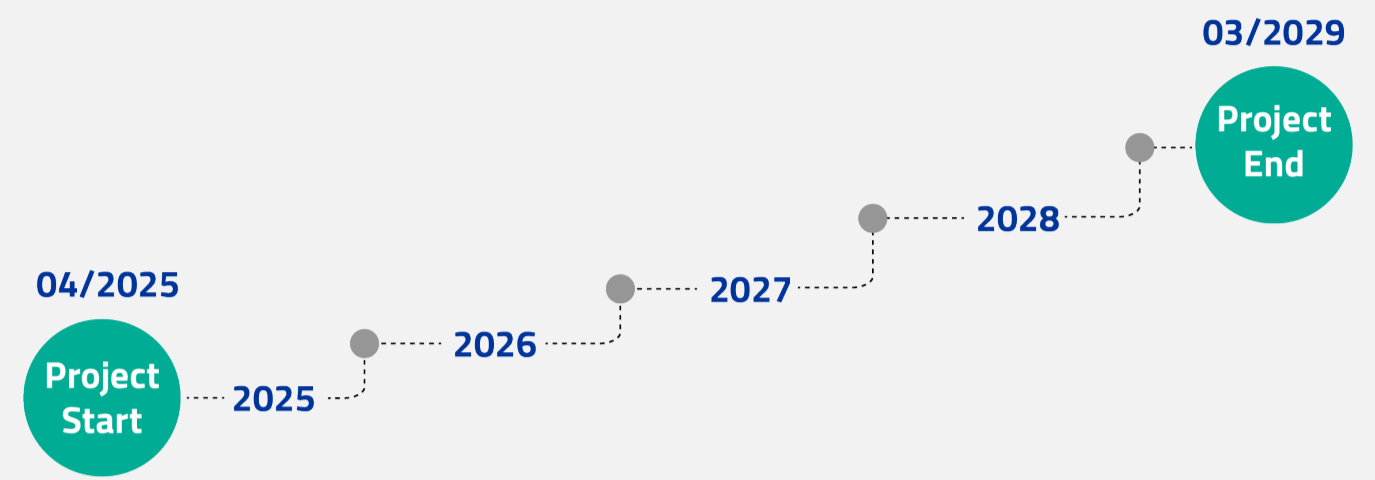
3 public cascade-funding calls supporting the development of short, modular training units that can be reused and adapted across Europe.



→ Certification

EVITA aims to support the development of a European-wide certification approach to facilitate the cross-border recognition of certificates. Certification-related activities are being explored in coordination with the HPC Certification Forum (HPC CF), which provides established approaches for hosting parts of the certification process, including certificate and examination-related elements.

GENERAL INFORMATION



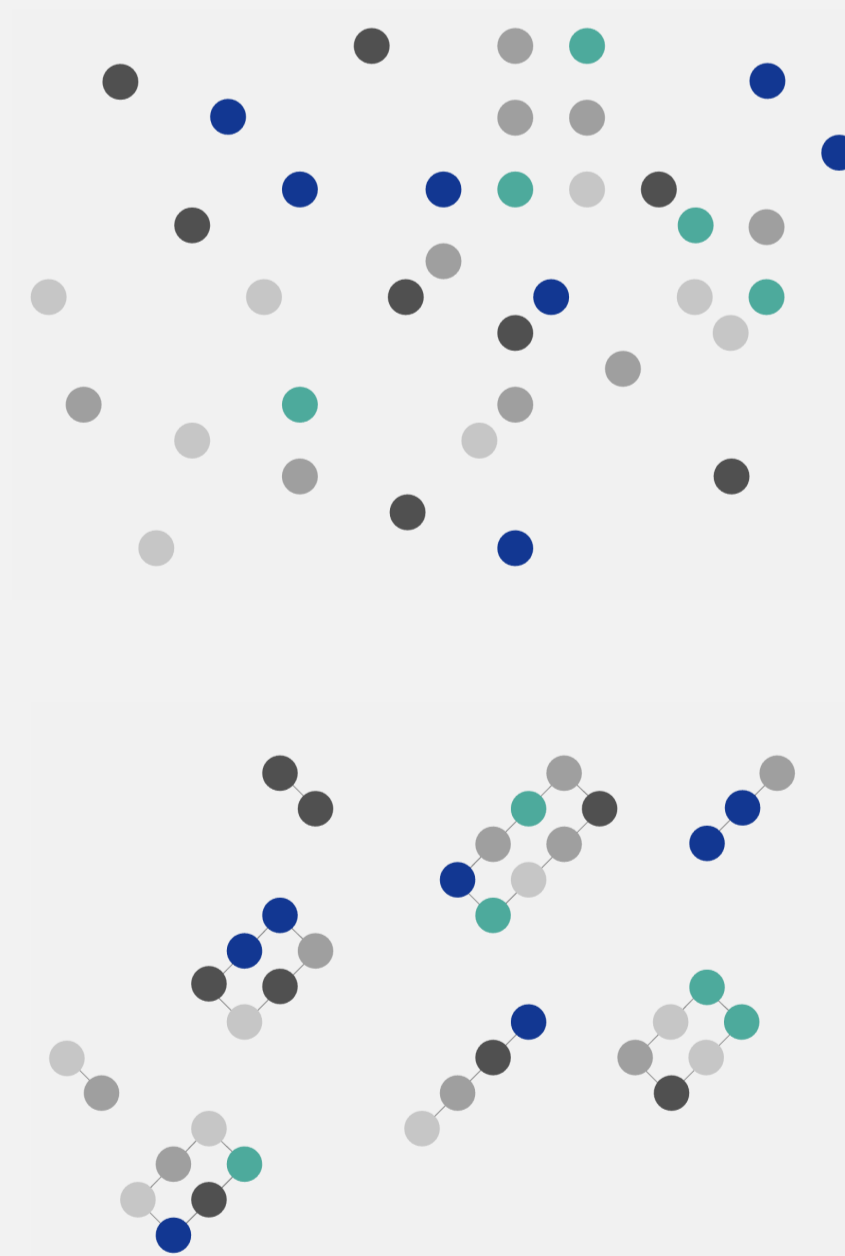
- Success is highly dependent upon input and feedback from the HPC community, including users, learners, educators, administrators, and researchers like you!

EVITA EXPLAINED



→ Skills – Modules – Courses – Learning Pathway structure

The EVITA framework brings together skills, modules, courses, and learning pathways within a coherent structure defined by the CQF. This structure clarifies how individual learning components relate to one another and provides a transparent basis for designing and organising training content across different levels and contexts.



Skills

Small, clearly defined ability that a learner can demonstrate in practice

Modules

Typically involves around 1–4 hours of guided learning and consist of one or more skills

Courses

Learning package made up of one or more modules, ranging from a few hours to multi-day or multi-week programmes

Learning pathways

Personalised progression that combines multiple modules and courses in an order tailored to an individual learner's goals

CONTACT US



info@evitahpc.eu

